

AIS-E Flu vaccines

How Mercy Care Partners with You
to Raise the Flu Vaccine Rate

1

Proprietary and Confidential



How Mercy Care partners with you to raise the rates for the AIS-E Flu measure

Adult Immunization Status (AIS-E) - flu

What vaccines are included in the Adult Immunization Status (AIS-E) measure?

Influenza: The percentage of members 19 years of age and older who are up to date on recommended routine vaccines for influenza.

Td/Tdap: The percentage of members 19 years of age and older who are up to date on recommended routine vaccines for tetanus and diphtheria (Td) or tetanus, diphtheria, and acellular pertussis (Tdap).

Zoster: The percentage of members 50 years of age and older who are up to date on recommended routine vaccines for zoster.

Pneumococcal: The percentage of members 66 years of age and older who are up to date on recommended routine vaccines for pneumococcal.

The Adult Immunization Status (AIS-E) measure includes the following vaccines: Influenza; Td/Tdap; Zoster and Pneumococcal

Why is AIS-E important?



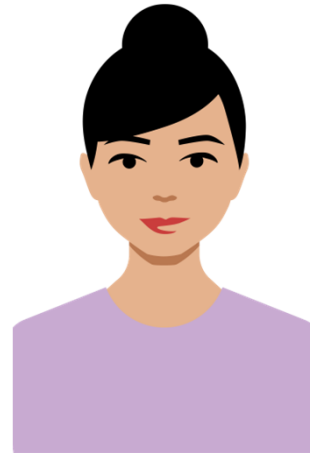
Vaccines are recommended for adults to prevent serious disease, hospitalization and death. Specifically, the Centers for Disease Control and Prevention's Advisory Committee on Immunization Practices (ACIP) recommends adults ages 19 and older receive an annual influenza vaccine and booster dose every 10 years of either tetanus and diphtheria (Td) or tetanus, diphtheria and acellular pertussis (Tdap) vaccine.

ACIP also recommends routine zoster vaccination for adults ages 50 and older and pneumococcal vaccination as a national priority. For instance, the National Adult Immunization Plan outlines a set of actions needed to achieve optimal prevention of infectious disease and specifically recommends regular monitoring of recommended adult vaccines.

Why is the AIS-E Flu measure important? Routine immunizations prevent serious disease, hospitalization and death.

Provider best practices

- Educate patients on the importance of being immunized.
- Schedule appointments for patients to receive immunizations within required timeframes.
- Display vaccine information in multiple languages throughout your office.
- Use the EMR system to set appointment reminder flags.
- Train medical staff to answer questions about vaccinations



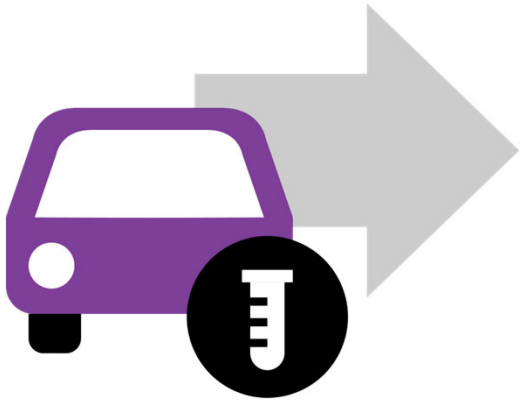
4

Proprietary and Confidential



Education and training are best practices to meet compliance.

Coverage and transportation



- No cost to the member
- No appointment (most pharmacies)
- Transport available – set up a few days in advance

5

Proprietary and Confidential



- Mercy Care and Mercy Care Advantage cover flu shots 100% for the member
- Most pharmacies offer flu shots without an appointment and Mercy Care In-Network pharmacies are listed on the Mercy Care member website
- Transportation is available and covered to get a flu shot. Members need to schedule the ride a few days ahead. It is also a good idea to call ahead to be sure the pharmacy has flu vaccine in stock.

Educational resources

- CDC: Prevent Seasonal Flu - <https://www.cdc.gov/flu/prevent/>
- CDC: Misconceptions about Seasonal Flu + Flu vaccines - <https://www.cdc.gov/flu/prevent/misconceptions.htm>
- CDC: This Flu Season - <https://www.cdc.gov/flu/season/index.html>
- CDC: Flu and Flu Vaccine Resources and Materials - <https://www.cdc.gov/flu/resource-center/index.htm>

The CDC website has a variety of educational topics on the flu and flu vaccines to help you educate your patients on the importance of getting an annual flu vaccine. These links go directly to the influenza homepage; there are a variety of subjects on the flu you may find useful

National and local flu activity

National data - <https://www.cdc.gov/flu/weekly/>

Arizona data -

<https://www.azdhs.gov/preparedness/epidemiology-disease-control/flu/index.php>

You may find these links helpful in tracking flu activity nationally and for the state of Arizona from the Department of Health. The state site will also let you see activity county by county.

Follow us @MercyCareAZ

